

## Step 1: Case assembly

Needed:

- Old Skool NES case + screws
- Screwdriver Phillips head
- Raspberry Pi 3, 2 or B+



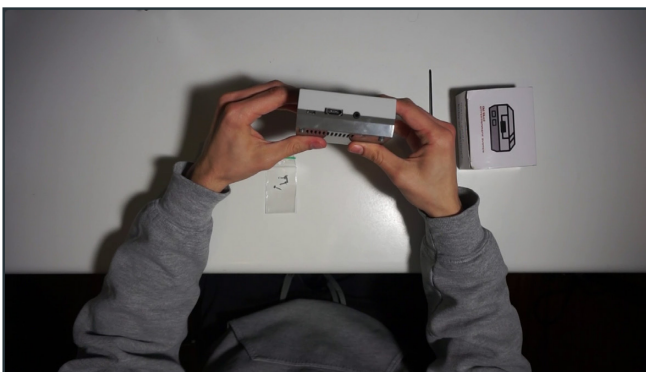
### 1.1 Place Raspberry Pi

Place the Raspberry Pi in the bottom part of your case.



### 1.2 Place top part

Place the top part of your case on top



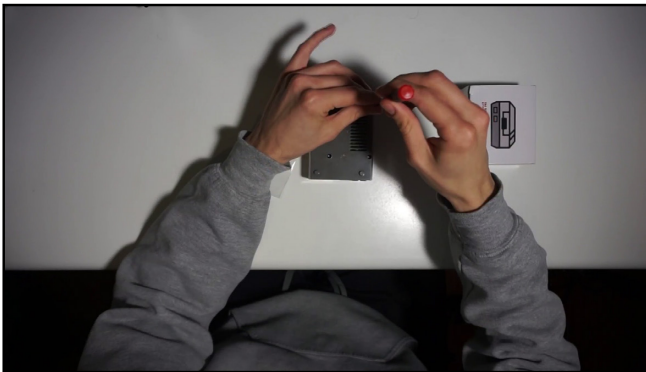
### 1.3 Align

Make sure both sides align and turn your case upside down.



### 1.4 Screws placement

Put the screws in the 4 holes in the bottom part of your case.



### 1.5 Screwdriver

Screw the screws in with a screwdriver.



### 1.6 Nailed it

That's it!

## Step 2: RetroPie Setup

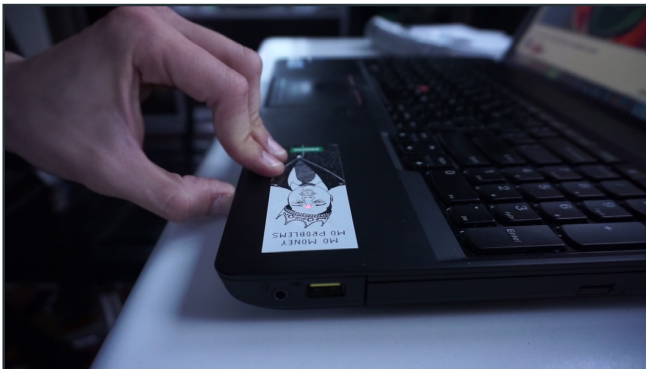
In order to start playing your retro video games you need two things: Game ROMs and an emulator. A ROM is a copy of a game that exists on your device. An emulator is an application that can play that ROM. Let's get started.

Needed:

- Controller
- HDMI/DVI monitor or TV
- HDMI cable
- Laptop or pc with SD port
- Old Skool NES case + Raspberry Pi
- Micro SD card
- USB Keyboard
- USB micro power supply (preferably the official Raspberry Pi power supply)

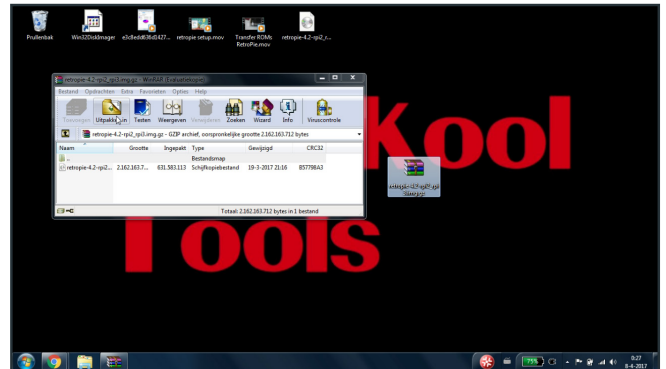
Download:

- Extraction program (for example, [7-Zip](#))
- [RetroPie image](#) (for this setup we use version 4.2)
- [Win32DiskImager](#) (Windows) / [ApplePi-Baker](#) (Mac)



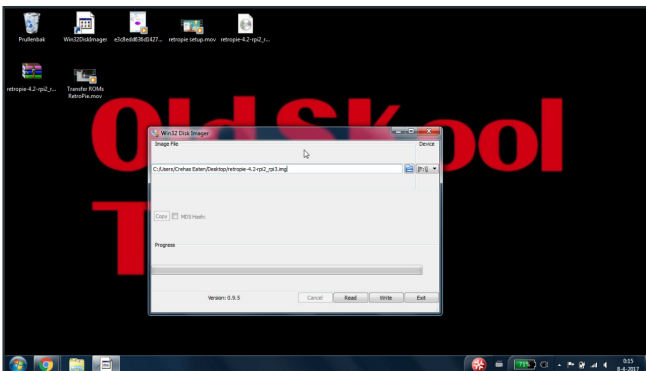
## 2.1 Insert your SD card

Insert your SD card in the SD card slot (Note the drive letter assigned to the SD card, for example G:)



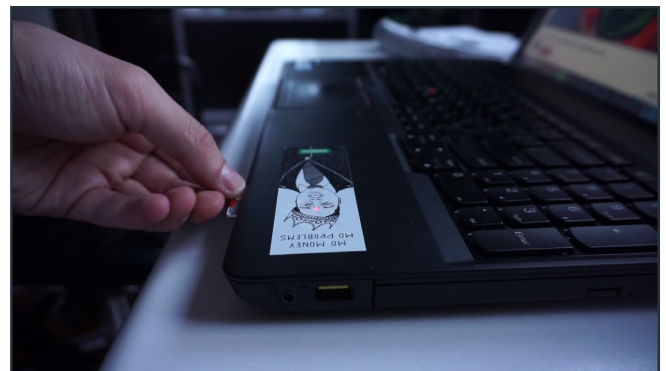
## 2.2 Unzip

Unzip the downloaded RetroPie project SD card image with an extraction program.



## 2.3 Extract

Extract the RetroPie project SD card image to the SD card. Be careful to select the correct drive (Windows users can do this really easily with the Win32DiskImager, and Mac users can use the ApplePi-Baker. Linux users have to use a pretty simple command line trick.)



## 2.4 Remove SD

Remove the SD card from your laptop or pc.



## 2.5 Insert SD card

Insert the SD card you just flashed into your Raspberry Pi.



## 2.6 Plug in controller

Plug one of your controllers and your keyboard into your Raspberry Pi.



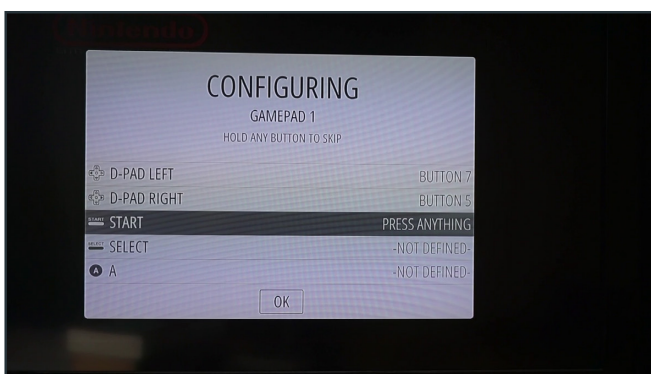
## 2.7 Plug in HDMI

Plug the HDMI cable into your Raspberry Pi.



## 2.8 Plug in power supply

Plug the power supply into your Raspberry Pi.



## 2.9 Set up controller

Follow the onscreen prompts with your controller to set it up (up, down, left, right, etc) (These controls will work in both the emulators and in RetroPie itself. On top of controlling basic movement, you also get a number of "hot keys" so you can quickly do certain actions from inside games. It's very useful to know how to exit a game, create a save, and load a save.)

- Select+Start: Exit a game
- Select+Right Shoulder: Save
- Select+Left Shoulder: Load
- Select+Right: Input State Slot Increase
- Select+Left: Input State Slot Decrease
- Select+X: RGUI Menu
- Select+B: Reset



## Step 3: Transferring ROMs

There are multiple ways to transfer your ROMs to your Raspberry Pi. We're going to show you two methods:

- Transferring ROMs via a USB stick (3.1 – 3.10)
- Transferring ROMs via SCP (3.11 – 3.13)

**USB** stick needed:

- USB stick (formatted to FAT32)
- Raspberry Pi (powered on)
- USB keyboard

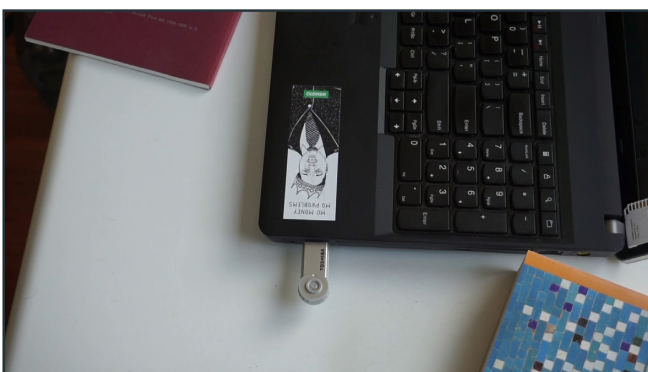
**SCP** needed:

- Ethernet cable (wired)
- Raspberry Pi  $\geq 3$  or Raspberry Pi  $\leq 2$  with a WiFi dongle (wireless)
- USB keyboard

Download (only for SCP method):

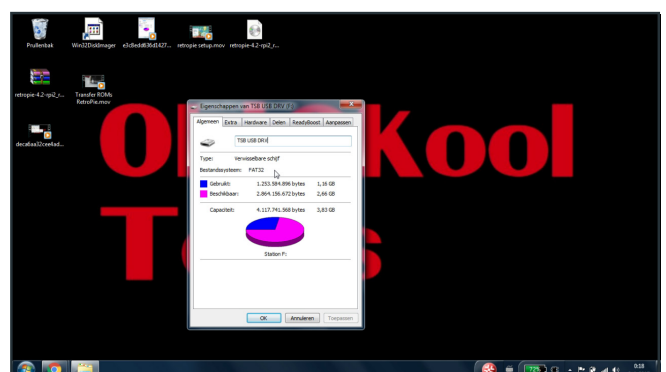
- [WinSCP](#) (Windows)
- [Cyberduck](#) (Mac)

### USB stick method:



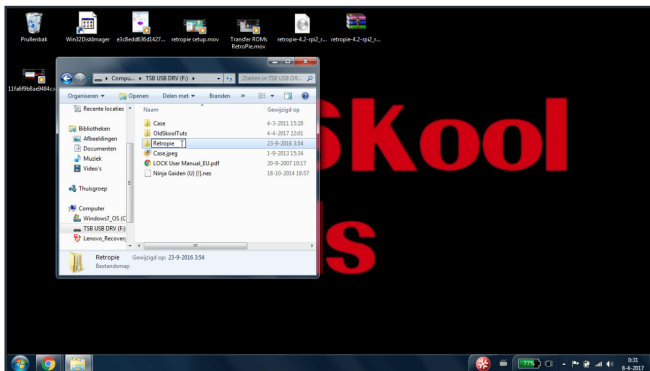
#### 3.1 Insert USB

Insert the USB stick in your computer.



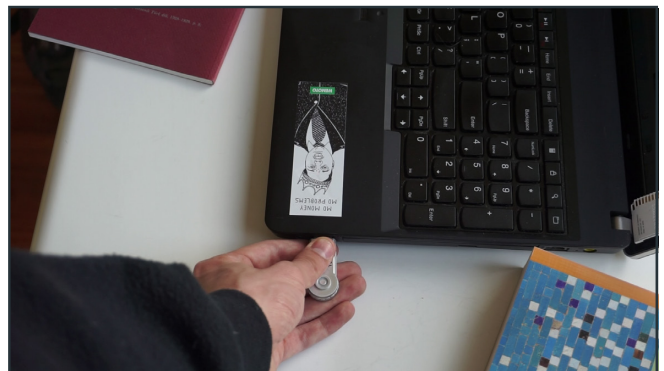
#### 3.2 Format USB

Make sure that your USB is formatted to FAT32.



### 3.3 Create folder

Create a folder called retroPie on your USB stick.



### 3.4 Remove USB

Remove the USB stick from your computer.



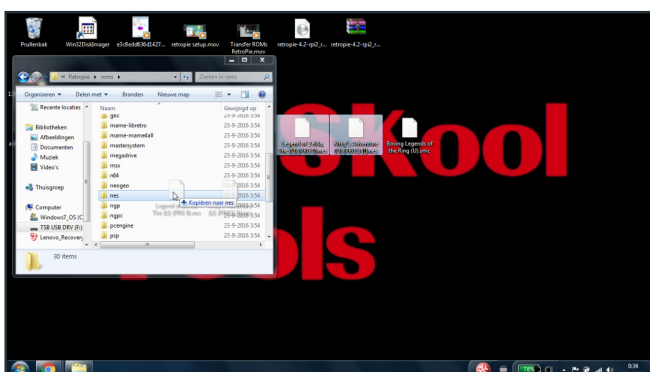
### 3.5 Plug USB into Raspberry

Plug your USB stick in your Raspberry Pi and wait for your USB stick to stop blinking (If your USB doesn't have a light just wait 5 minutes to be sure).



### 3.6 Remove USB and plug in

Take your USB stick out of your Raspberry Pi and plug it into your computer.



### 3.7 Add ROMs to folder

Add the ROMs to their respective folders (in the retroPie/roms folder on your USB stick)



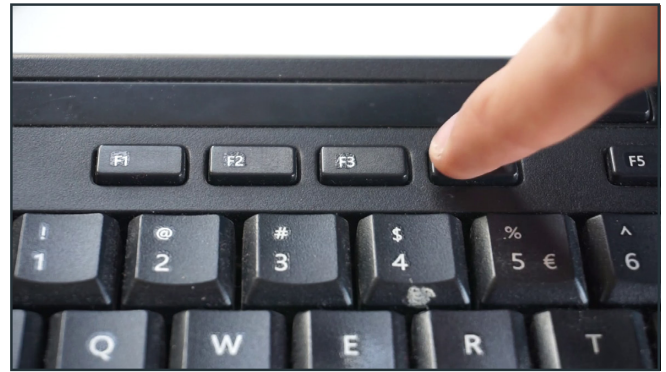
### 3.8 Back into Raspberry Pi

Plug your USB stick back into your Raspberry Pi.



### 3.9 Remove USB

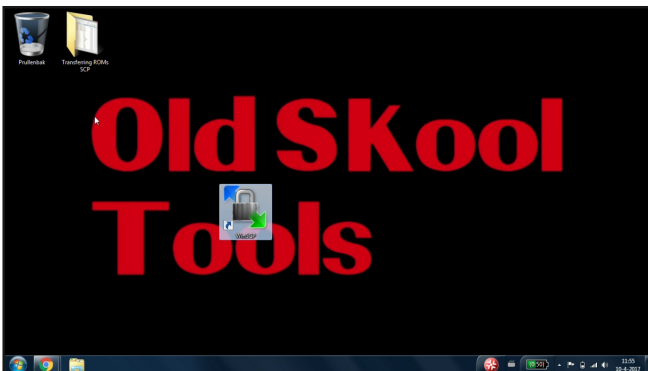
Remove your USB from your Raspberry Pi.



### 3.10 Refresh emulationstation

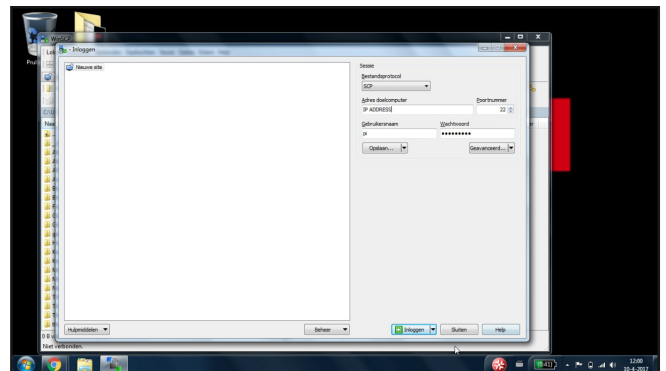
Refresh emulationstation by pressing F4 and typing in emulationstation, or choose quit from the start menu.

## SCP method:



### 3.11 Open WinSCP or Cyberduck (SCP method)

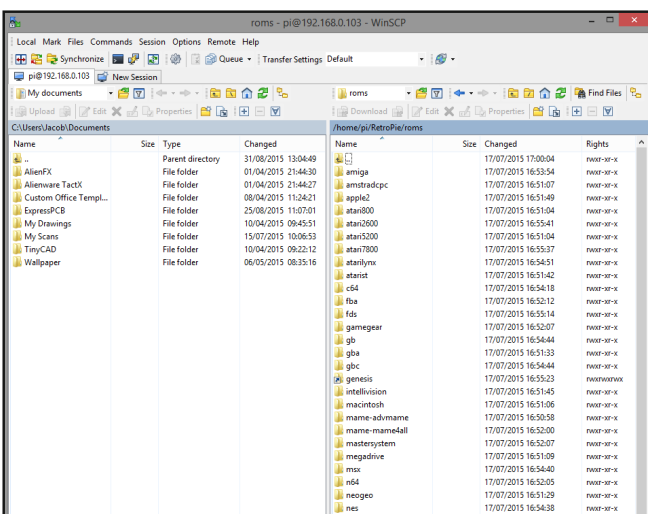
Open WinSCP or Cyberduck.



### 3.12 Setup (SCP method)

Setup the following

- File Protocol: SCP
- Host name: the IP address of your RetroPie. (To find the IP address of your RetroPie, go into RetroPie options from the main menu, and select the last option [ Show IP address ] )
- Username: pi
- Password: raspberry



### 3.13 Drop files (SCP method)

Drop the files in the ~/RetroPie/roms/\$CONSOLE folder, where \$CONSOLE is the name of the target console (e.g. snes or arcade)